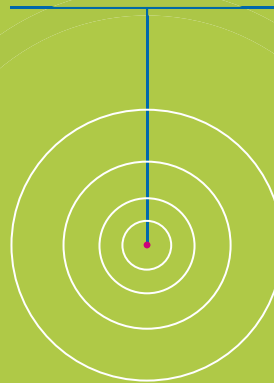


The biggest
breakthrough in
ultrasound accuracy
fits through
here.



Sterile disposable
needle

Stylet hub

Reusable
non-sterile
needle with
.9mm sensor

eTRAXTM

Guidance like never before.

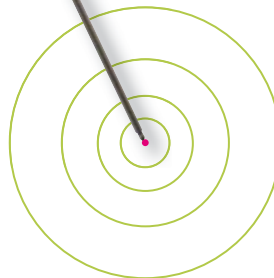
Introducing eTRAXTM

a breakthrough needle guidance system,
expanding real-time image-guided
navigation into a new dimension.

eTRAX features an electromagnetic sensor embedded into the needle tip. With the ability to now fuse other imaging modalities with ultrasound, eTRAX takes image fusion to a new dimension, giving physicians a more dynamic and accurate tool for tracking the tip of a needle under real-time, image-guided navigation. eTRAX provides significant clinical advantages over other technologies including increased clinical confidence in targeting difficult to access lesions, improved workflow, reduced procedure time and increased patient safety.

Now clinicians can have a highly accurate, 3D anatomical roadmap, providing safe — and easy — access to difficult targets. eTRAX may be used with devices for applications such as:

- Ablation
- Core tissue biopsy
- Drainage
- Fluid aspiration
- Therapeutic delivery
- Vascular access



How does it work?



1. Cover reusable eTRAX needle sensor with sterile CIV-FlexTM sensor cover



2. Slide sterile disposable needle sheath over eTRAX needle assembly and snap into place



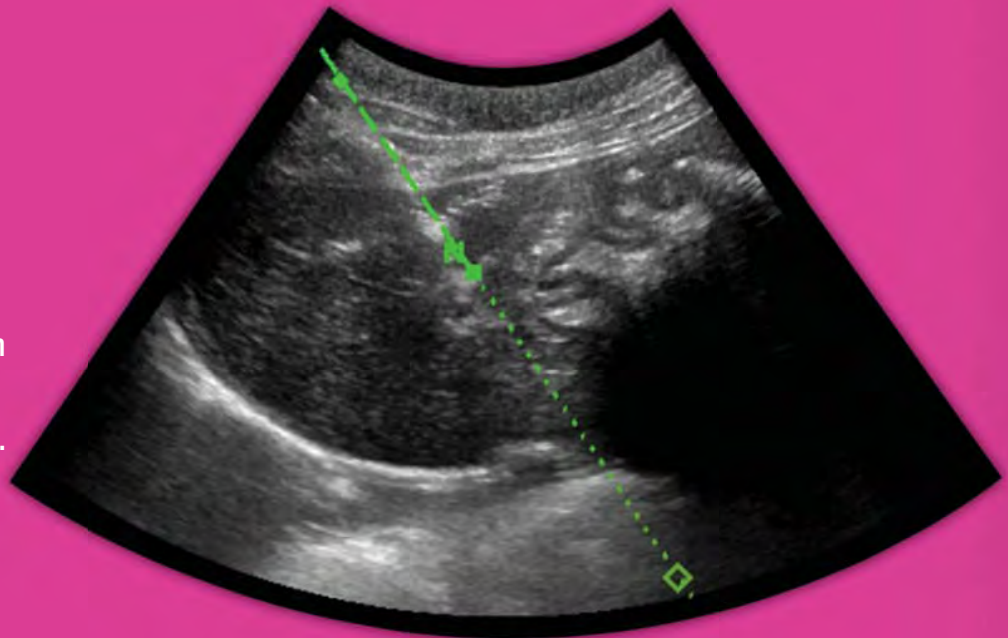
3. After puncture, remove sensor and disposable stylet from needle sheath



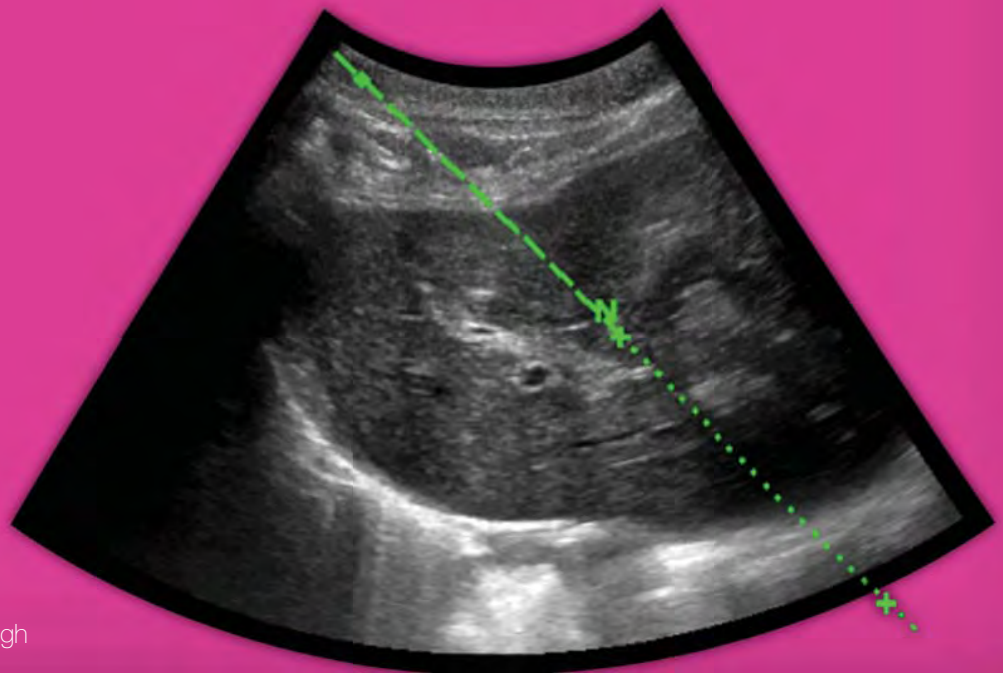
eTRAX offering Guidance Like Never Before

Increased clinical confidence in targeting lesions.

eTRAX allows tracking in an electromagnetic field. By tracking the tip of the needle, physicians are able to clearly visualize the placement of the needle in real-time or when used with pre-acquired 3D volume data sets. The location and orientation of the needle is clearly displayed on-screen. The result? A safe and cost-efficient procedure with accurate targeting of lesions.



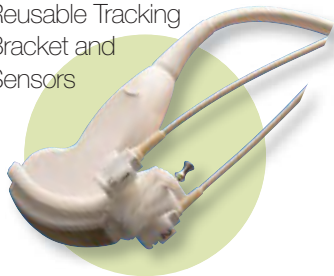
CIVCO also offers an open-channel needle guide, the Ultra-Pro[®], which facilitates eTRAX into the scan plane as you are advancing the needle under real-time guidance. The guide attaches to the custom reusable tracking bracket and accepts 14 gauge and smaller instruments.



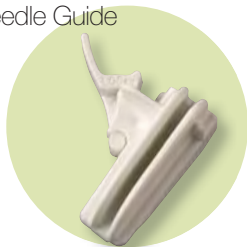
Visit www.CIVCO-eTRAX.com to read more about the breakthrough technology of eTRAX.

Primary eTRAX components:

Reusable Tracking Bracket and Sensors



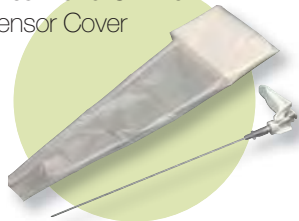
Sterile Disposable Ultra-Pro® Needle Guide



Reusable eTRAX Needle Sensor



Sterile Disposable eTRAX Needle Sheath and CIV-Flex Sensor Cover



Introducing VirtuTRAX™

Turn any needle into a tracked device.

Improved accuracy in targeting deep or difficult-to-access lesions.

VirtuTRAX is an intuitive device allowing physicians to more precisely track the tip of any rigid instrument.

Turn “off the shelf” instruments — such as ablation needles, syringes and bone biopsy needles — into virtual tip-tracked instruments. The two-part VirtuTRAX system consists of a sterile, disposable hand-held device and a reusable electromagnetic sensor. Simply attach VirtuTRAX to your device and a “virtually” tracked instrument is created. VirtuTRAX accepts needles from 8.5 to 20 gauge.

- Improved accuracy in targeting smaller, deeper or difficult to access lesions
- Improved workflow
- Reduced procedure time
- Increased patient safety



RF probe

Sterile disposable hand-held device

Reusable general purpose sensor

VIRTUTRAX™
Guidance like never before.

From CIVCO, a trusted leader in image guidance and infection control.

eTRAX and VirtuTRAX are compatible with validated ultrasound equipment and software only. Check www.CIVCO-eTRAX.com for details.

CIVCO Medical Solutions offers a full range of essential imaging and electromagnetic sensor accessories which allow the economical use of highly accurate tracking. Our products and services increase patient throughput and clinical productivity while improving patient outcomes.



For international distribution, visit CIVCO Worldwide at WWW.CIVCO.COM

Worldwide Headquarters: 102 First Street South, Kalona, Iowa 52247-9589 USA
319/656-4447, 800/445-6741 • Fax: 319/656-4451, 877/329-2482 • WWW.CIVCO.COM

COPYRIGHT© 2009. CIVCO IS A REGISTERED TRADEMARK OF CIVCO MEDICAL SOLUTIONS. CIV-FLEX, ETRAX, ULTRA-PRO E AND VIRTUTRAX ARE TRADEMARKS OF CIVCO. ALL OTHER TRADEMARKS ARE THE PROPERTY OF THEIR RESPECTIVE OWNERS. US PATENTS PENDING. ALL PRODUCTS MAY NOT BE LICENSED IN ACCORDANCE WITH CANADIAN LAW. PRINTED IN USA. 2009P-2443